



Monthly Newsletter

February 2021

The Tulare County RCD Board Meetings are open to the public and typically held on the second Wednesday of each month at noon in the Natural Resource Conservation Service (NRCS) Conference Room inside the USDA Service Center:

3530 W Orchard Ct

Visalia, CA 93277

(559) 622-0378

[Tulare County RCD Website](#)

[Tulare County RCD Email](#)

Due to COVID-19 our meeting for the month of February will be hosted on Zoom. The meeting is going to be held on Wednesday February 10th, 2021 at noon. Email teri@tularecountyrcd.com to receive the link for the Zoom hosted meeting.

teri@tularecountyrcd.com

WORLD AG EXPO 2021

World Ag Expo 2021 Online

World Ag Expo Online will kick

off February 9-11, 2021 (the original show dates). Live events and seminars will be scheduled for 9:00 a.m. to 4:00 p.m. PST each day, but content will be available on-demand at no charge to attendees around the clock.



Click the link below to go to their home page:

[World Ag Expo 2021 Online](#)

[Visit our website](#)

DRIVER/OPERATOR WANTED

Tulare County RCD Water Tender Driver/ Operator



Job description:

- Drive and operate a water tender on active fires.
- Water tender to support fire agency suppression efforts.
- Work shifts “may” be up to 24 hours per shift.
- Must follow instructions and be a self-starter.
- Mechanical ability a must.
- Commitment time for work may be extended, i.e. days, weeks or up to a month.
- Driver must provide their personal gear, i.e. change of clothes and toiletries.
- Applicant must provide their own lugged sole- 8 inch high lace up boots.



Qualifications for a driver would include:

- CDL class “A” or “B” license with “tanker” endorsement.
- Current Cal Fire and USFS “8-hour Safety Training” certificate.
- Fire experience preferable.

To apply contact:

Bob Puls

Project Manager

email: rvfire@ocsnet.net

phone: (559) 783-4148

CURRENTLY HAPPENING

Tulare County RCD



Tulare County RCD currently is operating with common Covid precautions in effect. Monthly meetings open to the public are held online. We can be reached by phone and/or email:

(559) 622-0378

Tulare County RCD Email

NRCS Visalia Service Center

USDA  **NRCS**
U.S. Department of Agriculture
Natural Resources Conservation Service

Your local NRCS Service Center has conducted business (with safety precautions) throughout the entire pandemic. Call the Visalia NRCS office to learn the latest protocol being used:

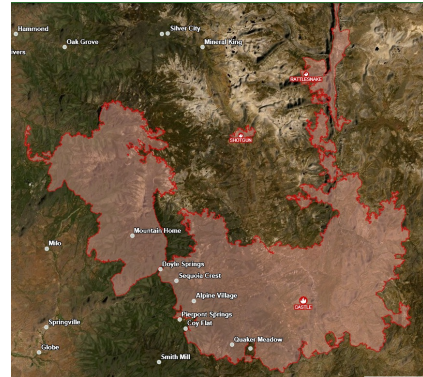
(559) 734-8732

LOCAL EVENTS

SQF Complex Fire

The deadline to submit an application for Phase II of the consolidated Debris Removal Program has been EXTENDED to February 15th, 2021.

The SQF Complex Fire is the largest wildfire in Tulare County's modern history. The wildfire has burned over 170,000 acres of Tulare County forest land.



Tulare County Local Assistance Center

County of Tulare has opened a comprehensive Local Assistance Center for residents impacted by the SQF Complex Fire. Residents who lost a home, suffered property damage, or impacted by the wildfire. Receive assistance with information, basic needs, and referrals to assistance program and services.

Click the link below to learn more:

[Tulare County LAC](#)

The LAC link provided above will take you to all the resources available to those affected by the SQF Complex Fire from Federal help, State help, and Local help.

SQF Complex Fire Hotline for residents:

(559) 802-9790

During winter storm season, Tulare County and many of the cities therein provide loose



sand and sandbags as a service to the community.

The sandbags are not pre-filled.

The following link will provide distribution locations operated by Tulare County.

Sandbag Distribution Locations for Tulare County

RCPP CRISIS TO OPPORTUNITY

Sierra Nevada Tree Mortality

The RCD is providing technical assistance to private non-industrial forest landowners in the form of site visits, creation of forest management plans, and promoting participation in the NRCS EQIP funding through the RCPP (Regional Conservation Partnership Program). This program is for land owners whom are looking to reduce the fuel load on their property.

Direct Line for your Tulare County RCPP assistance:

(559) 754-3155


RCPP Email


RCPP CRISIS TO OPPORTUNITY:
**SIERRA NEVADA
 TREE MORTALITY**

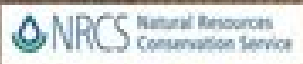
Financial assistance is available for dead tree removal and other forest health practices through NRCS.


RCPP program allows for EQIP (Environment Quality Incentive Program) funds to be used within the 100 foot defensible space zone and has no acreage minimum for applicants.

Working
together
for you...









Visalia County Resource Conservation District
 3550 W. Dickard Ct.
 Visalia, CA 93277
 Direct Line for RCPP Program: (559) 754-3155
 Email: rcpp@visaliacountyrcd.com
www.visaliacountyrcd.com

The RCPP Crisis to Opportunity: Sierra Nevada Tree Mortality program makes funding available for work within the 100-foot Defensible Space.

The RCPP Sierra Nevada Tree Mortality program requires a minimum of one dead or dying conifer tree within your 100 foot defensible space caused by the bark beetle or drought.

TECHNICAL ASSISTANCE AVAILABLE



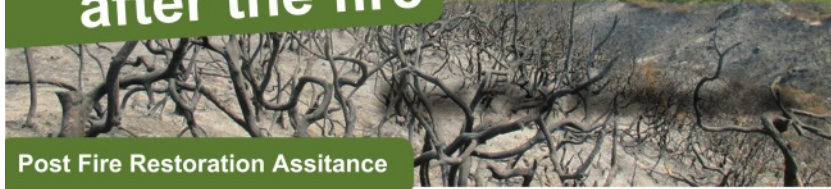
STILL IN EFFECT: The local NRCS is providing free technical assistance to those affected by the SQF Complex Fire. Contact the Visalia Service Center to learn more:

California 2020



Natural Resources Conservation Service
3530 W Orchard Ct
Visalia, CA 93277
(559) 754-3183

after the fire



Post Fire Restoration Assistance

NRCS is providing **FREE TECHNICAL ASSISTANCE**

to protect life and property on
privately owned land that was
damaged due to the wildfires.

(Examples: debris flows, hillside erosion.)

For assistance with post-fire recovery contact your local NRCS office:

**NRCS Visalia Service Center
3530 W Orchard Ct
Visalia, CA 93277
(559) 754-3183**

Fact Sheets Available at:

www.nrcs.usda.gov/wps/portal/nrcs/main/ca/newsroom/features/

USDA is an equal opportunity provider, employer, and lender.

NRCS Free Technical Assistance for SQF Complex Fire

Click the link above for any inquiries you'd like addressed via email.
